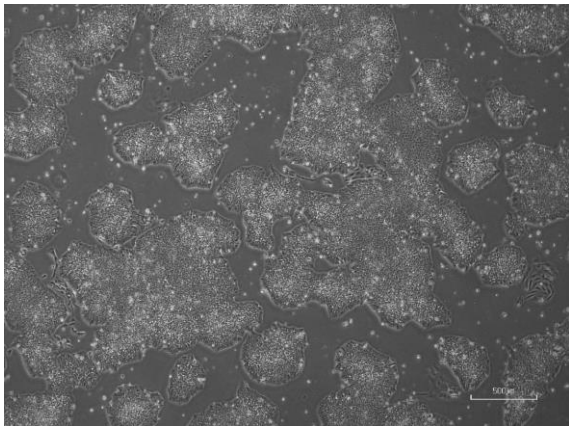
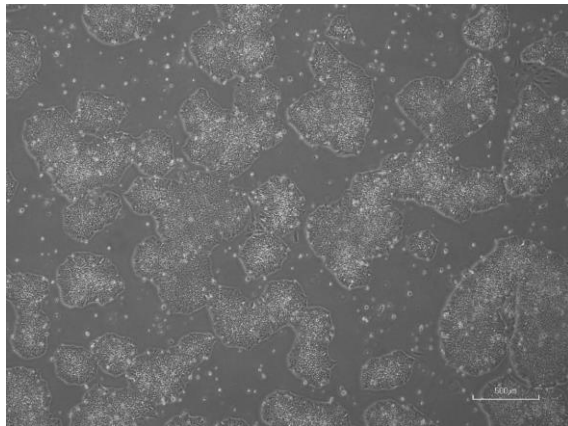


【 CiRA-jk-0118 】 Morphology of iPSC colonies

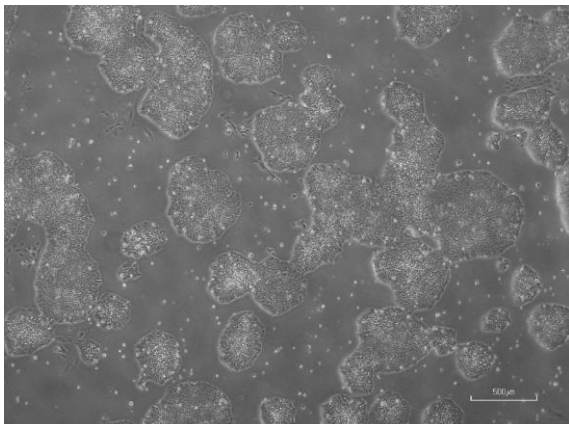
CiRA-jk-0118-A: passage-3



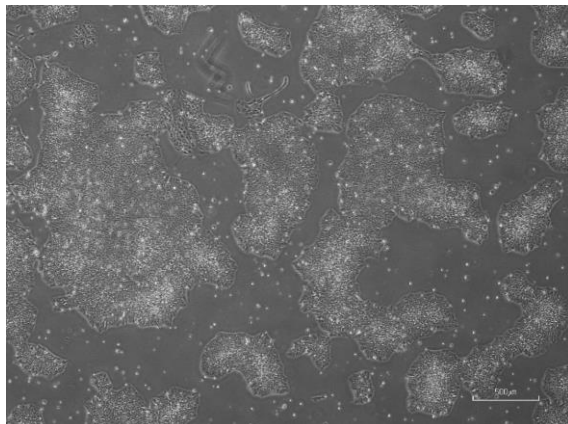
CiRA-jk-0118-B: passage-3



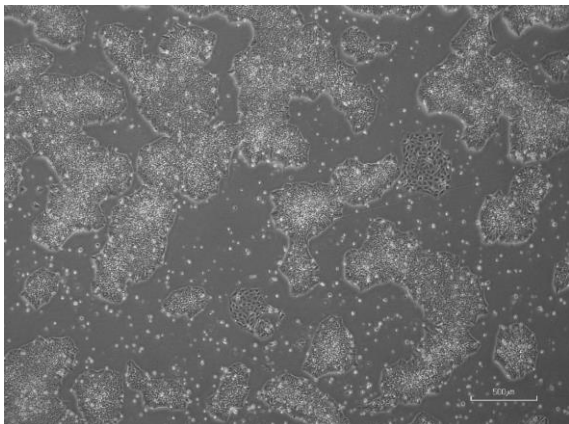
CiRA-jk-0118-C: passage-3



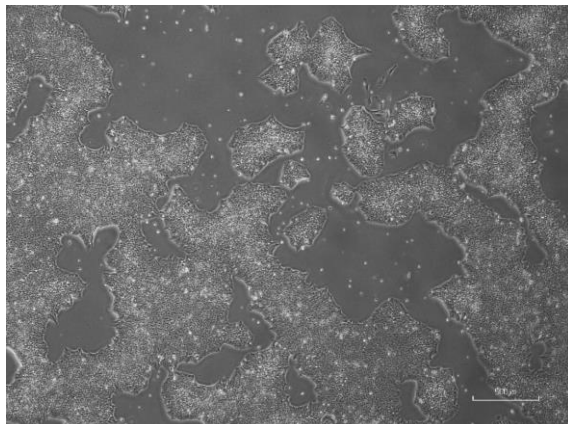
CiRA-jk-0118-D: passage-3



CiRA-jk-0118-E: passage-3



CiRA-jk-0118-F: passage-3



(All images were captured at 4x magnification)